



# XGA16K

MOBILE ELEVATING WORK PLATFORM

Comply with AS/NZS/CE/ANSI/CSA



# XGA16K

## MOBILE ELEVATING WORK PLATFORM

### OVERVIEW AND FEATURES

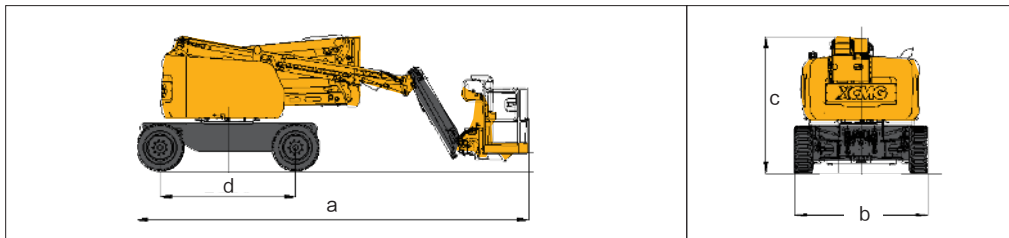
The 16m "Σ" linkage folding hybrid boom type mobile lifting work platform is a compact, efficient, precise, powerful and easy to operate curved boom type mobile lifting work platform. It is easy to operate, safe, reliable, accurate and efficient, and can meet the needs of a wide range of users in the construction, steel, petrochemical, stadium and rental industries.

### PERFORMANCE ADVANTAGES AND FEATURES

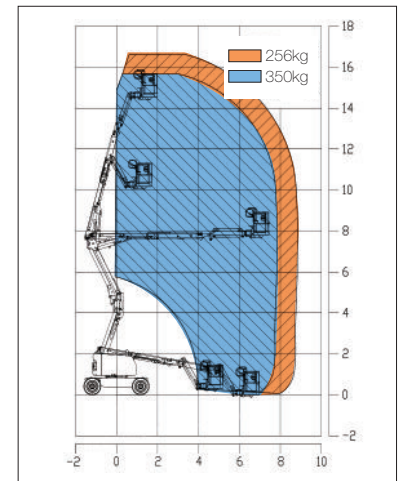
- The 256/350kg double working curve, large load design and industry-leading load performance.
- Upward, downward and crossing multi-directional precise positioning and excellent extension function.
- Electrical system with distributed PLC control technology and adaptive control of proportional valves for leading environmental adaptability.
- Full hydraulic drive, 355 ° non-continuous free rotation of the turntable, simple operation and high reliability.
- Four-wheel drive, 45% climbing capacity, equipped with axle balance, strong ground adaptability.
- Infinitely adjustable speed, better control and comfort.
- The uncharged design of the undercarriage enhances the vehicle's ability to wade through water.
- High reliability due to the use of iron hoardings.
- Independent emergency power source, convenient and secure for emergency collection.
- Compact and agile, the whole vehicle is compactly arranged, convenient for container transport.

### OPTIONS

- Solid tyres (standard)
- Tool tray
- Work light assembly



Work Curve Graph



### MAIN PARAMETER

Item	Metric	Imperial
Working Height	16.63 m	54 ft 7 in
Platform Height	14.63 m	48 ft
Horizontal reach	8.82m	28 ft 11 in
Lift capacity	256/350(Limited) kg	564/772(Limited) lbs
1st Boom luffing range	0~65°	0~65°
2nd Boom luffing range	-11~75°	-11~75°
Fly jib luffing range	-65~70°	-65~70°
Turntable rotation	355°Discontinuous rotation	355°Discontinuous rotation
Platform rotation	160°	160°
Tailswing-stowed	0	0
Drive Speed (storage or extended)	5.5(km/h)/0.6(km/h)	3.42 mph/0.37 mph
Min. turning radius (inside/outside)	3.2m/4.7 m	10 ft 6 in/15 ft 5 in
Ground clearance	300 mm	11.8 in
Gradeability (counterweight end up or down)	30% /45%(17°/24°)	30% /45%(17°/24°)
Tires	Standard: 33×12-20/7.5 Solid tyres Option: 315/55D20-18 Filled solid tyres	Standard: 33×12-20/7.5 Solid tyres Option: 315/55D20-18 Filled solid tyres
Batteries	12V DC	12V DC
Weight	7600 kg	16755 lbs
Platform size	1.83m x0.76 m×1.15m	6ft×2.5ft×3.8ft
a. Length(stowed,in operation)	6.85m	22 ft 6 in
Length (Transport, short arm folded down)	5.6m	18 ft 4 in
b. Full width	2.32m	7 ft 7 in
c. Full height	2.38m	7 ft 10 in
d. Wheelbase	2.36m	7 ft 9 in
Engine type	Kubota V2403BM-DI-CTO4e(stage III)	Kubota V2403BM-DI-CTO4e(stage III)
Engine power rating	36.0kW/2600rpm	36.0kW/2600rpm