



# XGA20K

MOBILE ELEVATING WORK PLATFORM

Comply with AS/NZS/CE/ANSI/CSA



# XGA20K

## MOBILE ELEVATING WORK PLATFORM

### OVERVIEW AND FEATURES

The 20m "Σ" linkage folding hybrid boom type mobile lifting work platform is a compact, efficient, precise, powerful and easy to operate curved boom type mobile lifting work platform. It is easy to operate, safe, reliable, accurate and efficient, and can meet the needs of a wide range of users in the construction, steel, petrochemical, stadium and rental industries.

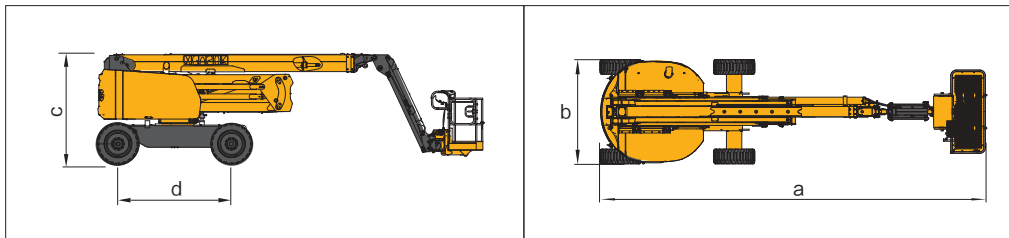
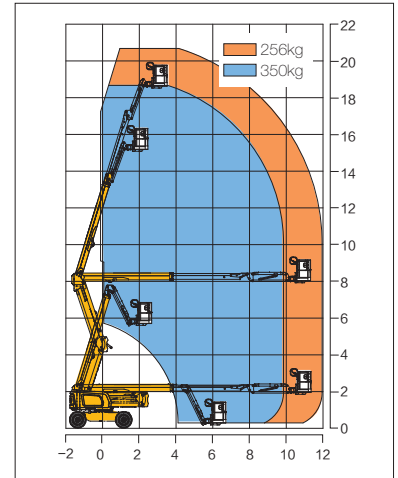
### PERFORMANCE ADVANTAGES AND FEATURES

- 256kg and 350kg dual load, large load design, to meet the needs of different working conditions.
- 360 ° continuous rotation, more convenient for operation.
- The whole machine is 2.4m high, 8.52m long and 2.3m wide, with small dimensions for convenient container transport.
- Four-wheel drive, climbing capacity 45%, standard equipped with axle balance, ground adaptability is stronger.
- The boom gravity descent technology is adopted, which is more smooth and energy-saving.
- Adopt infinitely adjustable speed, better control comfort.
- The design of dismounting without electricity enhances the vehicle's ability to wade through water.
- Adopt iron hoarding, high reliability.
- Independent emergency power source, convenient and guaranteed for emergency recovery.

### OPTIONS

- Half height mesh platform
- Platform anti-squeezer assist track
- Aircraft protection device
- Mechanical anti-extrusion device
- Cold resistant, fire resistant, biodegradable hydraulic fluid
- Tool tray
- Work light assembly
- Fall protection kit

Work Curve Graph



### MAIN PARAMETER

Item	Metric	Imperial
Working Height	20.63m	67 ft 8 in
Platform Height	18.63m	61 ft 1 in
Horizontal reach	12.08	39 ft 8 in
Lift capacity	256/350(Limited) kg	564/772(Limited) lbs
1st Boom luffing range	0~+72°	0~+72°
2nd Boom luffing range	0~+73°	0~+73°
Fly jib luffing range	-65~+70°	-65~+70°
Turntable rotation	360°	360°
Platform rotation	160°	160°
Tailswing	540mm	1 ft 9 in
Drive Speed (storage or extended)	5.5(km/h)/0.6(km/h)	3.42 mph/0.37 mph
Min. turning radius (inside/outside)	2.3m/5.0 m	7 ft 7 in/16 ft 5 in
Ground clearance	330mm	1 ft 1 in
Gradeability (counterweight end up or down)	30% /45%(17°/24°)	30% /45%(17°/24°)
Tires	36X14-20 355/55D625	36X14-20 355/55D625
Batteries	12V DC proportional control	12V DC proportional control
Weight	9900kg	21826 lbs
Platform size	1.83m x0.76 m x1.15m	6ft x2.5ft x3.8ft
a. Length(stowed,in operation)	8.52m	27 ft 11 in
Length (Transport, short arm folded down)	6.26m	20 ft 6 in
b. Full width	2.3m	7 ft 7 in
c. Full height	2.4m (stowed,in operation) 3m (Transport, short arm folded down)	7 ft 10 in (stowed,in operation) 9 ft 10 in (Transport, short arm folded down)
d. Wheelbase	2.5m	8 ft 2 in
Engine type	Kubota V2403BM-DI-CTO4e (stage III)	Kubota V2403BM-DI-CTO4e (stage III)
Engine power rating	36.0kW/2600rpm	36.0kW/2600rpm