



# XGS16K

MOBILE ELEVATING WORK PLATFORM

Comply with AS/NZS/CE/ANSI/CSA



# XGS16K

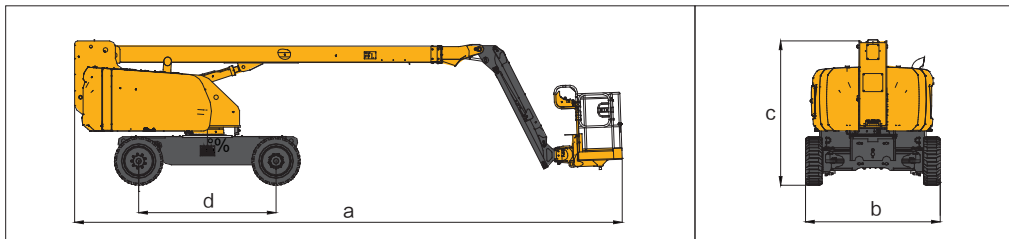
## MOBILE ELEVATING WORK PLATFORM

### OVERVIEW AND FEATURES

The XGS16K mobile lifting work platform is a straight-arm mobile lifting work platform with a compact design, precise, powerful drive and easy operation. Easy to operate, safe, reliable, accurate and efficient, it can meet the needs of a wide range of users in the construction, steel structure, petrochemical, arena and rental industries.

### PERFORMANCE ADVANTAGES AND FEATURES

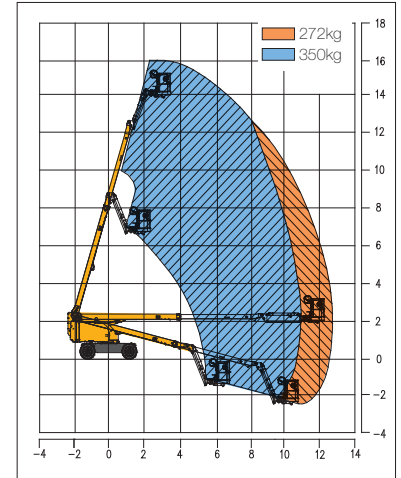
- 272/350kg double working curve, large load design, easy to operate.
- 360° continuous rotation for easier operation.
- Four-wheel drive, 45% climbing capacity, standard axle balance, better ground adaptability.
- Adopt gravity drop technology of boom, more smooth and energy-saving.
- Adopt infinitely adjustable speed, better control comfort.
- The design of dismounting without electricity enhances the vehicle's ability to wade through water.
- Adopt iron hoarding, high reliability.
- Independent emergency power source, convenient and guaranteed for emergency recovery.



### OPTIONS

- Tool tray
- Work light assembly

Work Curve Graph



### MAIN PARAMETER

Item	Metric	Imperial
Working Height	16m	52 ft 6 in
Platform Height	14m	45 ft 11 in
Working radius	12.7m	41 ft 8 in
Lift capacity	272kg/350(Limits)kg	600 lbs/772(Limits) lbs
Boom luffing range	-14~+73°	-14~+73°
Fly jib luffing range	-65~+70°	-65~+70°
Turntable rotation	360°	360°
Platform rotation	160°	160°
Turntable tail swing -stowed	1120mm	3 ft 8 in
Drive Speed (stowed/raised)	6 (km/h)/0.6 (km/h)	3.7 mph/0.4 mph
Turning Radius (inside)	1.9m	6 ft 3 in
Turning Radius (outside)	4.7m	15 ft 5 in
Ground clearance	0.3m	1 ft
Gradeability (counterweight end up or down)	45% /40%(24°/21°)	45% /40%(24°/21°)
Tires	835×295-20/7.5	835×295-20/7.5
Power source	12V DC proportional control	12V DC proportional control
Rated power	36.5kW/(2600r/min)	36.5kW/(2600r/min)
Fuel tank	90L	90L
Hydraulic tank	120L	120L
Weight	8050 kg	17747 lbs
Platform size	1830mm×760mm×1150mm	6 ft×2.5 ft×3.8 ft
a. Length(stowed)	9.4m	30 ft 10 in
Length (Transport)	9.1m	29 ft 10 in
b. Full width(stowed)	2.32m	7 ft 7 in
Full width(Transport)	2.32m	7 ft 7 in
c. Full height	2.48m	8 ft 2 in
d. Wheelbase	2.36m	7 ft 9 in
Engine type	Kubota V2403BM-DI-CTO4e(stage III)	Kubota V2403BM-DI-CTO4e(stage III)
Engine power rating	36.0kW/2600rpm	36.0kW/2600rpm